

# THE SANTA UNDERGROUND EXPERIENCE



Santa and his elves spend all year preparing for Christmas at the North Pole. However, he makes a special visit every year to his underground grotto at Arigna Mining Experience where he meets all of the boys and girls.



*"Absolutely brilliant... Best Santa experience ever. The kids loved it... face painting, magic show, elves and of course Santa. The staff here are the best, friendliest and most fun people you could ever meet. Remember it for next year..." - Christmas 2016*

For More Information, please visit our website  
[www.arignaminingexperience.ie](http://www.arignaminingexperience.ie)

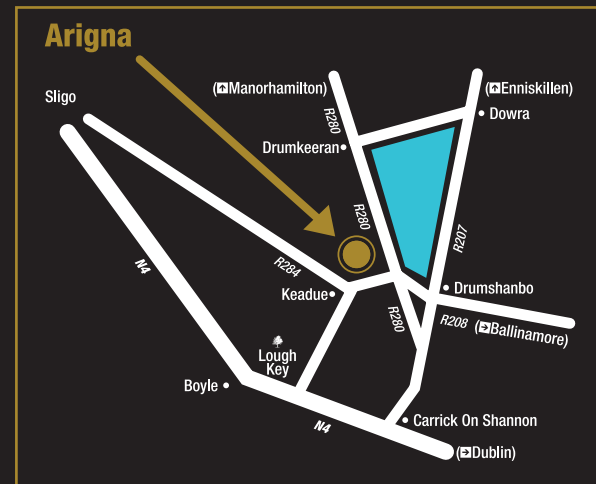


## Explore the Miners way

Explore the Miners Way and Historical Trail a series of way-marked routes that form a network through Counties Roscommon, Sligo & Leitrim. The walks range from 2km to 4.5km and include a lakeside loop and Doon Point loop. The routes total over 118 kms in length, a range of walks to suit all levels of walkers.



## Where to find us...



Arigna Mining Experience is located 11 miles from Carrick-on-Shannon (N4) and 5 miles from Drumshanbo.

From Dublin (N4) to Carrick-on-Shannon and (R280) to Arigna via Leitrim Village.

From Belfast M1 and then A4 to Belcoo/Blacklion then R207 to Drumshanbo via Dowra and R280 to Arigna.



Dublin to Carrick-on-Shannon, Boyle or Sligo.

Derreenavoggy, Arigna, Co. Roscommon.

**LAT:** 54.0774471 **LON:** -8.1206563

**Postal Code / Eircode :** N41 YP78

**Open all year; Tours Available 10am – 5pm**

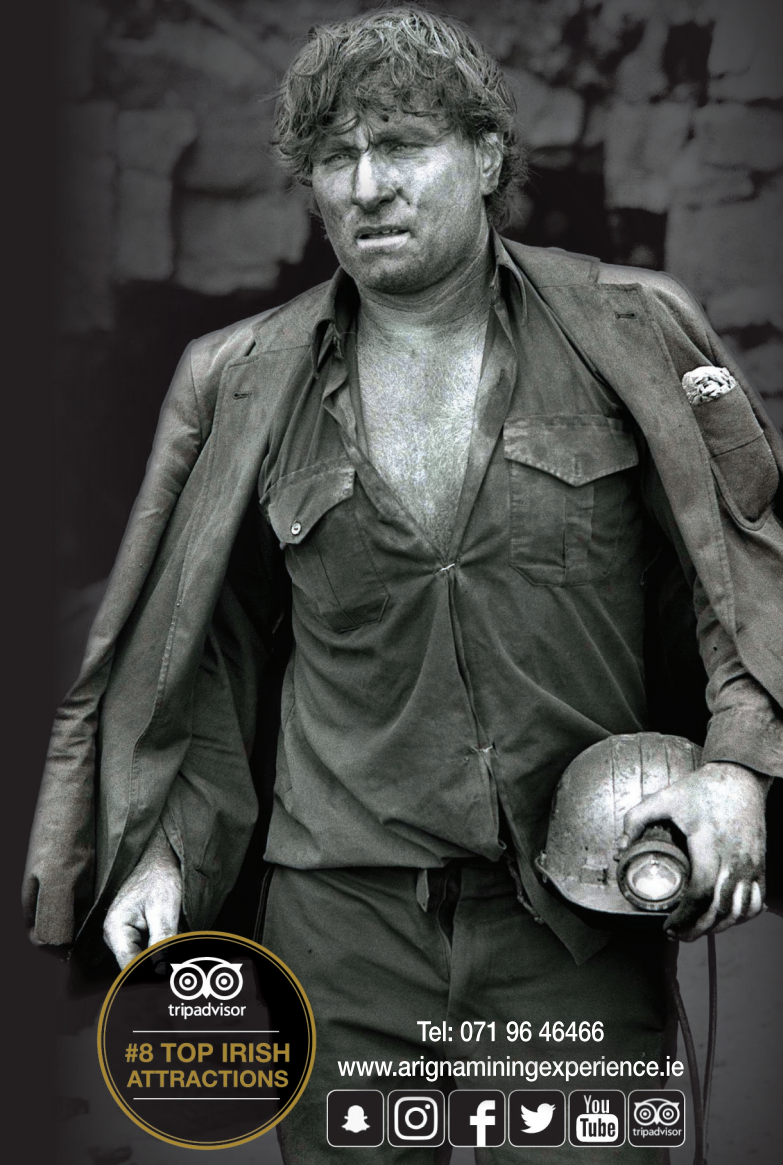
**Tel:** 071 964 6466

**Web:** [www.arignaminingexperience.ie](http://www.arignaminingexperience.ie)

**Email:** [tours@arignaminingexperience.ie](mailto:tours@arignaminingexperience.ie)



**Arigna  
Mining  
Experience**  
Co. Roscommon



**Tel:** 071 96 46466

[www.arignaminingexperience.ie](http://www.arignaminingexperience.ie)





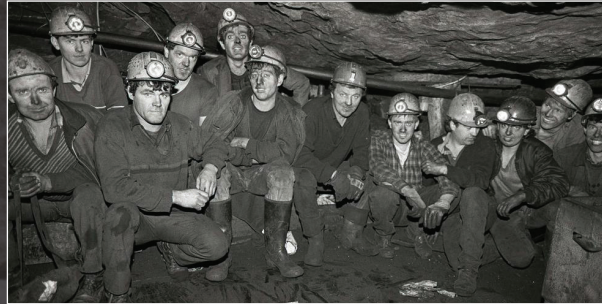


## Welcome to Arigna Mining Experience

The Arigna Mining Experience in Co. Roscommon will certainly appeal to those looking for a day out with a difference.

The visitor centre is located in a beautiful scenic location overlooking Lough Allen. Now a popular tourist spot, this visitor centre is a community inspired initiative that preserves the 400 year coal mining heritage of this area, and provides visitors with an insight into coal mining life as it was in the Arigna Valley for centuries.

With an ex-Miner as your tour-guide, the visit to the centre includes a DVD presentation, an authentic audio-visual exhibit and a photographic exhibition. The highlight of the visit is an underground tour with an ex-miner where lighting and sound effects add to the reality of the experience. The centre is fully accessible and is an all-weather facility. It is an ideal day out for the family.



“ THE CRUNCH  
of the ground beneath the feet,  
the dripping of  
**WATER**  
OVERHEAD, the  
INTENSITY  
of the  
**DARKNESS,**  
the sheer sense of the incredible  
**ENDURANCE**  
of the men that worked here,  
**YEAR AFTER YEAR,**

totally  
**DEPENDENT**  
on each other to stay out of  
danger or even to  
stay alive...”



The highlight of your visit is the underground tour brought to life by an ex-miner as your tour guide, where you will be brought to the mine's coal face in what was Ireland's last working coal mine.

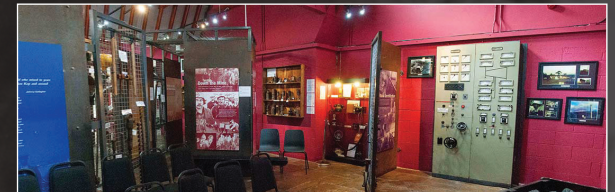


## Arigna Valley Views

The centre overlooks Lough Allen and the Arigna Valley where a view of five surrounding counties can be seen on a clear day.

## Gift Shop and Tasty Treats

Relax and enjoy the hospitality in our beautifully situated coffee shop where tasty treats, freshly baked scones, breads, cakes and speciality coffees are on the menu. We also have a gift shop in which you can browse and pick up a souvenir as a memento of your visit.



## Schools Programme

We also run several programmes for Schools and Colleges, i.e. Wind Energy Exhibit Area, Enterprise and Rural Tourism presentations by prior appointment.

## Tour Guidelines

- The Underground tour lasts about 45 minutes
- Temperature underground is 10°C, so an extra layer of clothing is advisable.
- Walking surface on tour is suitable for all footwear types.
- No pets allowed in centre or on tour. Guide dogs welcome.
- Both the visitor centre and underground tour are fully wheelchair accessible.

