

RUSSBOROUGH

The most beautiful house in Ireland

RUSSBOROUGH

The most beautiful house in Ireland

RUSSBOROUGH

The most beautiful house in Ireland

INTERACTIVE EXHIBITION



New for 2011 is an extensive self guided exhibition which includes interactive touch screens, audio listening hand-sets, slideshow presentation, cinema projections and films in the original cinema. Special features are 3D photographs and 2D films from the 1920's and 1930's taken by Sir Alfred Beit on his world travels. A selection of his



Fred Astaire - Russborough 1977
extensive vinyl record and sheet music collections from the 1920's onwards are also on display. Part of the Exhibition is also devoted to previous owners, local history stories about Poulaphuca reservoir and the Blessington Tramway.



Mick Jagger & Marianne Faithfull
Russborough 1965

Visits to the house are by guided tours (1 hr)
Self Guided Interactive Exhibition (1 hr)

	Single	Season Ticket
ADULTS	€10	€20
STUDENTS/OAPs.....	€8	€16
CHILDREN (5-16 Yrs)	€5	€10
FAMILY ADMISSION	€25	€50
<small>(2 adults & 4 children under 16)</small>		
CHILDREN UNDER 5	FREE	

Tour Translations available in French, German, Italian & Spanish

Groups and Private Tours by prior arrangement at anytime during the year

Entrance to the Maze

Adults & Children	€3	€6
Family Admission	€10	€20
Parkland Walks	FREE	

Cafe open for light refreshments & lunches

Shop open for souvenirs, crafts & gifts.

FREE COACH & CAR PARKING AVAILABLE

GPS: Lat 53.135517 Long 6.572386



Blessington, Co. Wicklow

Tel: 045 865 239

email: events@russborough.ie

www.russborough.ie



OPEN 10am - 6pm
(Last Admission 5.00pm)

Every Sunday and Bank holiday in April
Every day in May, June, July, August & September
Every Sunday and bank holiday in October
Open on all other days by prior appointment.



THE FAMOUS 7 FOOT HIGH BEECH HEDGE MAZE

Blessington, Co. Wicklow

Tel: 045 865 239

email: events@russborough.ie

www.russborough.ie

Blessington, Co. Wicklow

Tel: 045 865 239

email: events@russborough.ie

www.russborough.ie



RUSSBOROUGH HOUSE AND DEMENSE



THE FRONT HALL

Built in 1741 for Joseph Leeson, the first Earl of Milltown, it is regarded as one of Ireland's most beautiful houses. It has magnificent views of the Blessington Lakes and the Wicklow Mountains. In 1978 Sir Alfred Beit opened the house to the public for guided tours. The house which is beautifully maintained and lavishly furnished contains fine furniture, tapestries, carpets, porcelain, silver and much of the Beit collection of paintings. It has impressively beautiful ceilings, plaster work and a mahogany staircase.

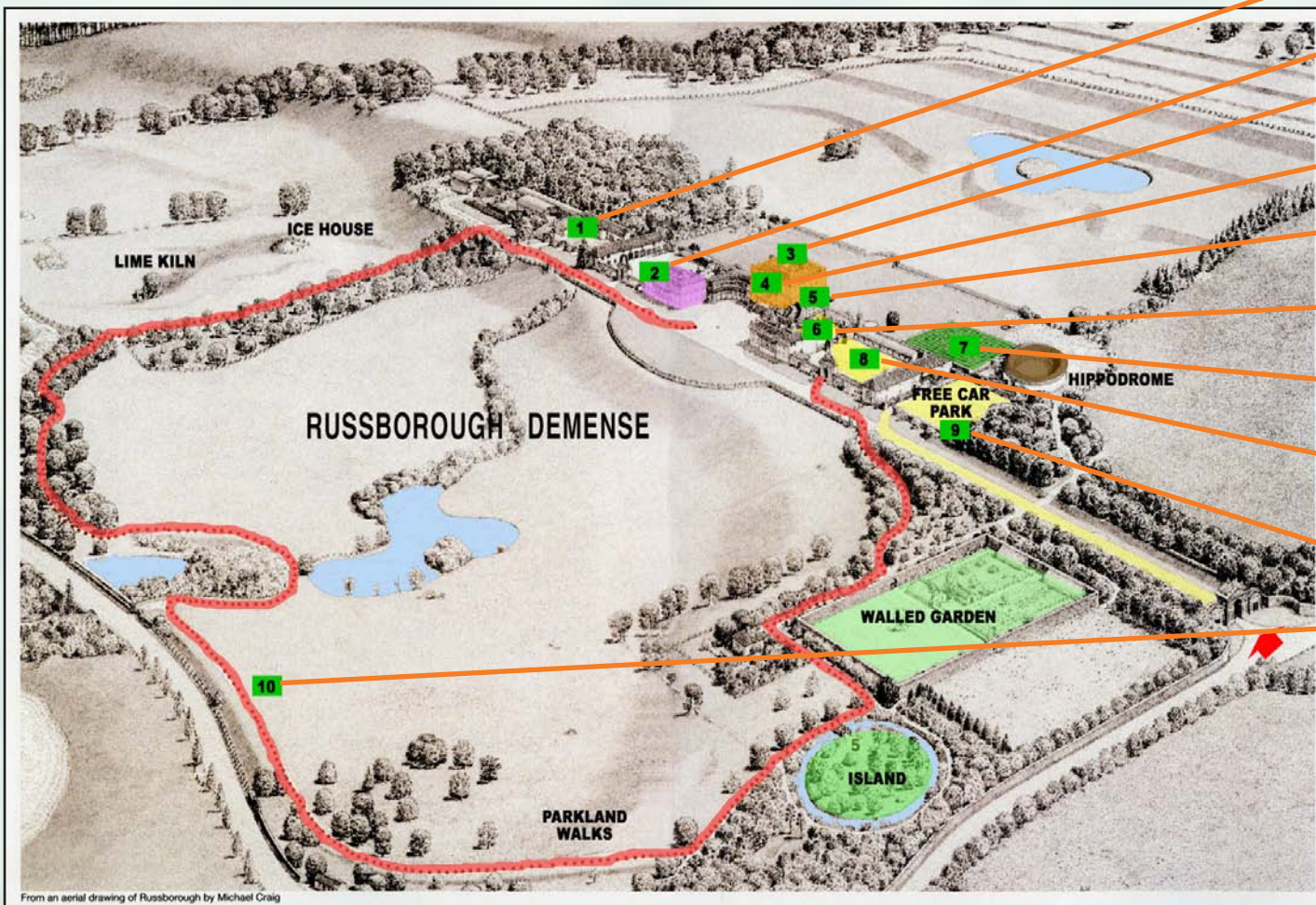
In 2011 the Self Guided Interactive Exhibition opened providing great family entertainment and experience.



SIR ALFRED & LADY BEIT



FAMILY FUN AT RUSSBOROUGH



From an aerial drawing of Russborough by Michael Craig

- 1 BLACKSMITHS FORGE AND WEAVER
- 2 WEST WING SELF CATERING ACCOMMODATION (From Autumn 2011)
- 3 INTERACTIVE EXHIBITION (1 Hour)
- 4 GUIDED TOUR (1 Hour)
- 5 SOUVENIR SHOP, RECEPTION & TOILETS DISABLED ACCESS & LIFT
- 6 KITCHEN GARDEN CAFE - Teas/Coffee/Scones - Light Lunches
- 7 MAZE (30 minutes)
- 8 CRAFT WORKSHOPS - West Wicklow Arts & Crafts - Wood Turner (Opening Times Vary)
- 9 FREE PARKING
- 10 PARKLAND WALKS (30 Minutes)

2012 ADDITIONS
COACH ACCESS & PARKING
CHILDRENS PLAY AREA
WALLED GARDEN

Russborough, Blessington, Co. Wicklow
Tel: 045 865 239
email: events@russborough.ie
www.russborough.ie